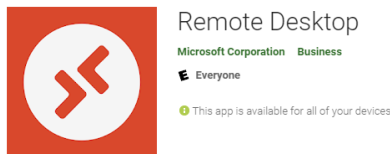


Notes:

- Remote applications are run remotely from a server. Due to this, you will need to remain connected to the internet while using the applications.
- Any work performed within the applications will need to be saved to OneDrive or to a Class share (more detail at the end of the document).

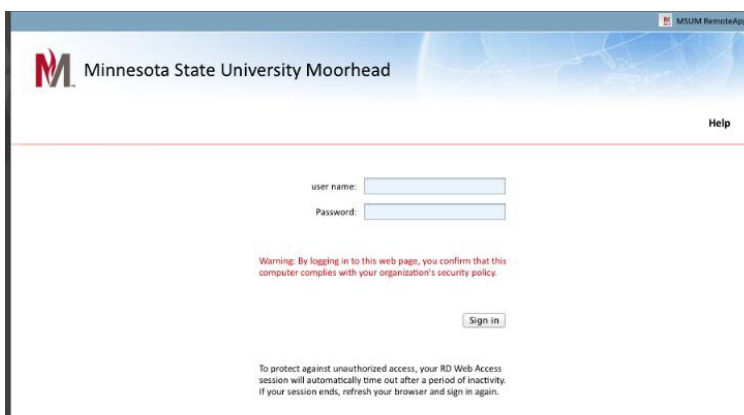
Accessing Remote Apps

1. To access Remote Apps on Chromebooks, you will need to have the following installed:
 - a. **Microsoft Remote Desktop app.** We always recommend using the latest version, check for updates often.
 - i. From Google Play, search for Microsoft Remote Desktop app.
 - ii. Make sure it is labeled "Microsoft Corporation" and not another product.
 - iii. Click "Install" to install it on your Chromebook.
 - iv. Microsoft Remote Desktop will be listed under applications once the install is complete



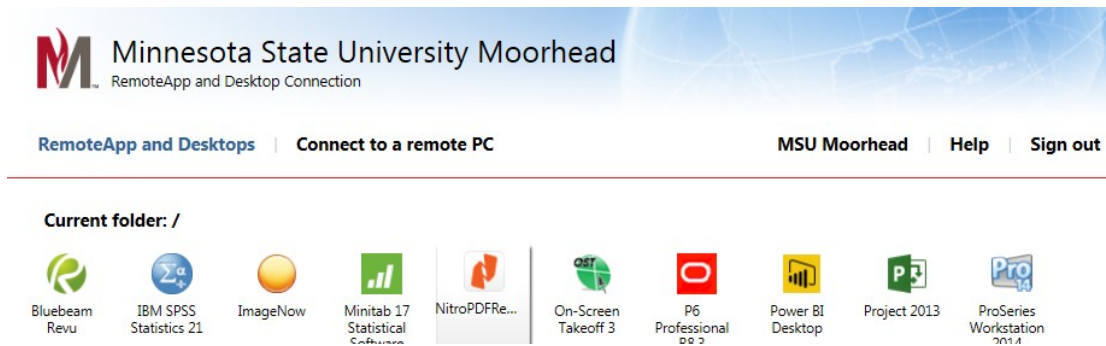
- b. **Cisco Anyconnect VPN** - [Chromebook install instructions](#)

2. Open a Web browser enter the following url: <https://remote.mnstate.edu>
3. Enter your StarID credentials and Sign in.

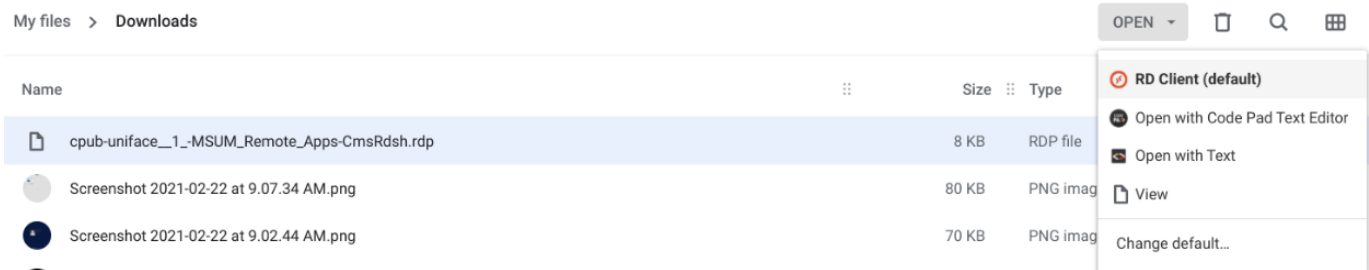


Once logged in you will see any remote applications that have been made available to you:

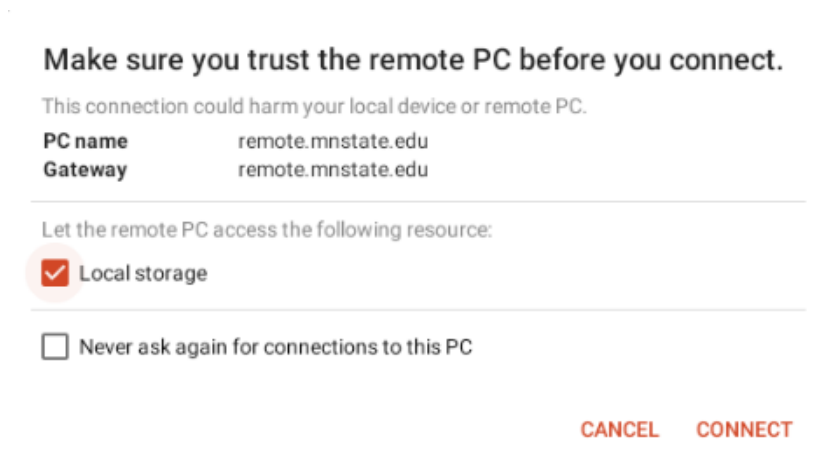
Note: Your software list may be different than what is shown above. If you do not see the software that you are looking for, please email the helpdesk at support@mnstate.edu.



4. Click on the program you would like to run.
5. A file will be downloaded to your default download location rather than automatically running the program.
6. Browse to the download location and click the file to highlight it.
7. You can click on the "Open" button in the upper right corner of the screen and choose to "Open with" the RD Client. In that same window you can choose to change the default application to open it with the RD Client automatically if you wish.



8. You will likely get a window like this allowing you to choose what access the remote server will have to your computer. Make your choices and click "Connect".



9. You will be prompted with a couple of login screens, enter your starid credentials as shown below. You MUST have **mnstate\starid** as the user name format for both of these windows.

Enter Your User Account

This user account will be used to connect to (gateway).

USERNAME

mnstate\starid

PASSWORD

☐ Store username and password

CANCEL CONTINUE

Enter Your User Account

This user account will be used to connect to remote.mnstate.edu:3389 (remote PC).

USERNAME

User@domain or domain\user

PASSWORD

☐ Store username and password

CANCEL CONTINUE

10. The system will take a moment to authenticate your credentials on the server. After this is complete, your app will open and be ready for use.

Saving on Remote Applications

- Since remote apps are running directly from a server, you will need to be mindful of where you save your work.
- If you save to the C drive or Local disk, you may be saving to the C drive of the server. Since there are multiple servers, there is a chance that you won't connect to the same server next time and won't have access to any saved files.
- To save work when using Remote Apps, the best practice is to use your Office365 Onedrive storage. This way you can access the files from both the application as well as through your computer's browser without having to login to the application.
- After 10-15 minutes of being logged into your application you will see a small window showing a onedrive mapper which is needed to access your Office365 Onedrive. Sign into it when prompted (the sign in screen may be hidden behind your application so minimize the app screen).

OnedriveMapper v4.07 is (re)connecting your drives...

When you sign in to onedrive, use your credentials in the format of:

Employees

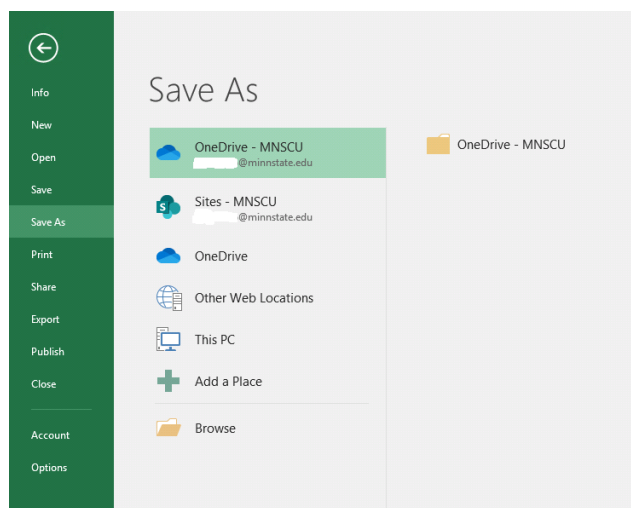
<starid>@minnstate.edu

Students:

<starid>@go.minnstate.edu for

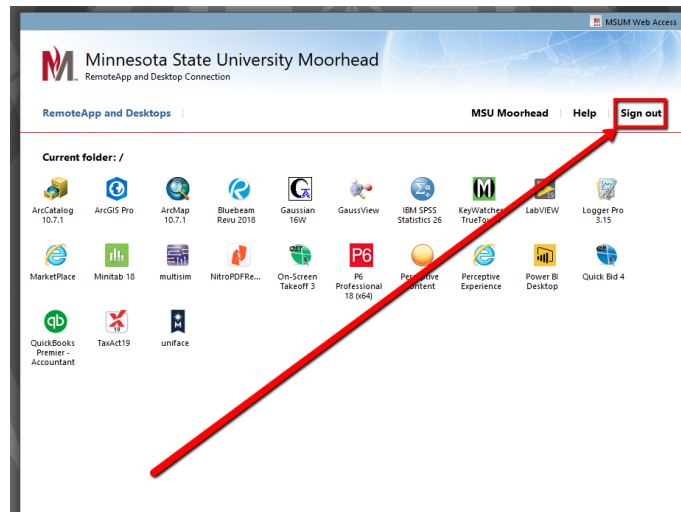
Password:

Your StarID password



Disconnecting from RemoteApp

1. Close all open applications.
2. Click **Sign Out** on the top Right Corner.
 - a. Close Internet browser.



For More Information

Please contact the IT Help Desk at support@mnstate.edu or 218.477.2603 if you have questions about this material.